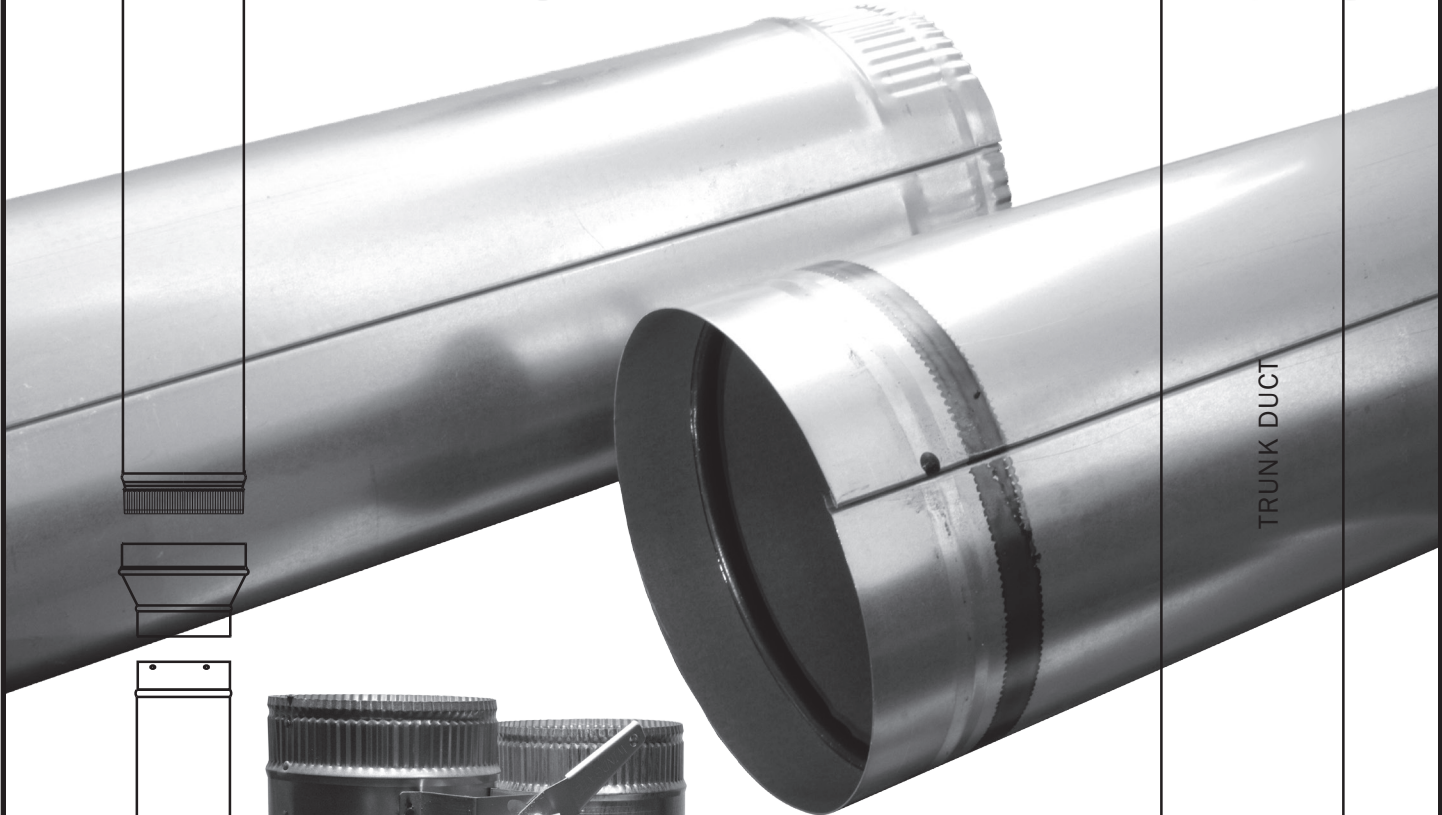


PIPE & FITTINGS



TRUNK DUCT



Green Duct System
D Seam [®] **+**

MANUFACTURED BY DUCTMATE INDUSTRIES, INC.

Contents

Index



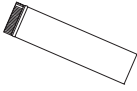
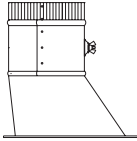
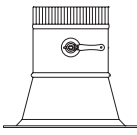
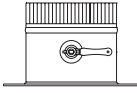
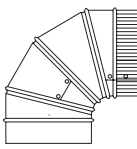
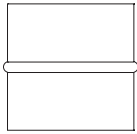
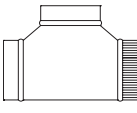


Product Families

Specs & Detail Views

GreenSeam®+ Snap Lock Pipe Specifications.. 3
 GreenSeam® Snap Lock Pipe Specifications 5
 Appendix A - Low-Leakage Hardware.....26
 Appendix B - Stand-Off Hardware 27
 Appendix C - 3/8" Solid Rod HETO.....28

Product Views

GreenSeam®+ Snap Lock Pipe 2
 GreenSeam® Snap Lock Pipe..... 4
 Reeves Lock Pipe 6
 Straight-Sided High Efficiency Take-Off 7
 Tapered High Efficiency Take-Off 8
 Center High Efficiency Take-Off..... 9
 Press-On Conical 10
 Spin-In Conical 11
 Spun Press-On Starting Collar..... 12
 Spun Press-On Flex Starting Collar 13
 3" Lg. Tabbed Starting Collar 14
 6" Lg. Tabbed Starting Collar 15
 3" Lg. Spin-In Starting Collar 16
 6" Lg. Spin-In Starting Collar 17
 45° Adjustable Elbows 18
 90° Adjustable Elbows 19
 6" Lg. Coupler..... 20
 8" Lg. Coupler..... 21
 Free Flow Tee..... 22
 90° Tee Joint..... 23
 Reducers..... 24
 End Cap 25

 GreenSeam®+Snap Lock Pipe ... 2
 GreenSeam® Snap Lock Pipe..... 4
 Reeves Lock Pipe 6
 High Efficiency Take-Offs 7
 Conicals 10
 Starting Collars..... 12
 Adjustable Elbows 18
 Couplers..... 20
 Tee Joints 22
 Reducers..... 24
 End Caps..... 25

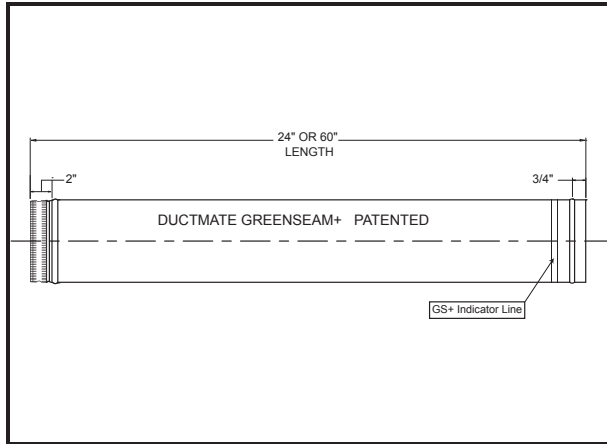
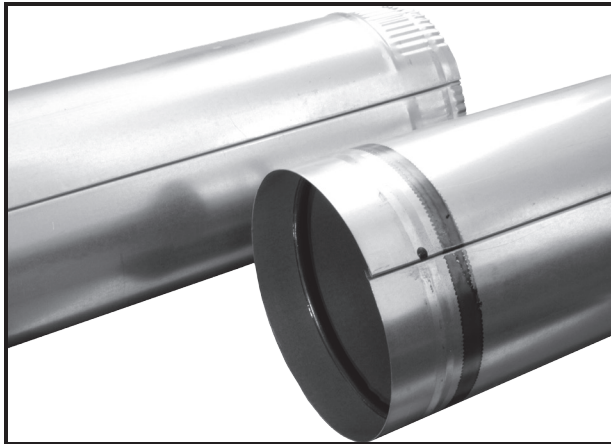


This symbol denotes a GreenSeam® Sealed Fitting



All pipe is available with yellow union label only. All fittings are available with blue or yellow union label.

GreenSeam® + Snap Lock Pipe



Product Availability - 24" Lengths			
Size (Ød)	Gauge		
	28 Ga.	26 Ga.	24 Ga.
4"	Yes	Yes	-
5"	Yes	Yes	Yes
6"	Yes	Yes	Yes
7"	Yes	Yes	Yes
8"	Yes	Yes	Yes
9"	Yes	Yes	Yes
10"	Yes	Yes	Yes
12"	Yes	Yes	Yes
14"	-	Yes	Yes

Product Availability - 60" Lengths			
Size (Ød)	Gauge		
	28 Ga.	26 Ga.	24 Ga.
4"	Yes	Yes	-
5"	Yes	Yes	Yes
6"	Yes	Yes	Yes
7"	Yes	Yes	Yes
8"	Yes	Yes	Yes
9"	Yes	Yes	Yes
10"	Yes	Yes	Yes
12"	Yes	Yes	Yes
14"	-	Yes	Yes

Technical Data	
<ul style="list-style-type: none"> Galvanized Steel (ASTM A653 and A924) G-60 Galvanized Coating (ASTM A653 and ASTM A90) Pressure Rating: -1" wg - +2" wg Button Lock Pipe meets SMACNA RL-8 	<ul style="list-style-type: none"> Available in Specialty Metals: <ul style="list-style-type: none"> Aluminum (ASTM B209 Alloy 3003 Temper H14) 304 Stainless Steel (ASTM A480 2B Finish) Patent # 7,478,467, Patent # 7,708,034, and Patent # 7,992,904 Additional Patents Pending

Part Number Schematic							
Example: 60SPBGP10GA26 = 60" long, 10" round GreenSeam®+ Snap Pipe in 26Ga. Galvanized Steel							
60 Pipe Length 24 - 2' 0" 60 - 5' 0" 48 - 4' 0" AL, S4 Only	SP Snap Pipe	B Lock Type B - Button	G GreenSeam	P PLUS	10 Pipe Diameter (Ød)	GA Material GA-Galvanized (Std.) AL - Aluminum, S4 - 304 S.S.	26 Gauge GA: 28, 26, 24 AL - 25 S4 - 26

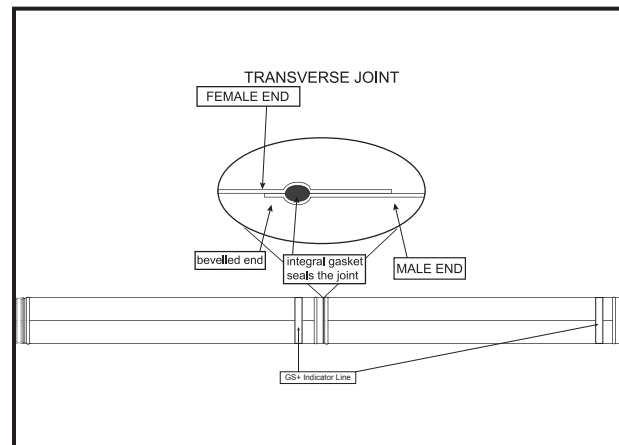
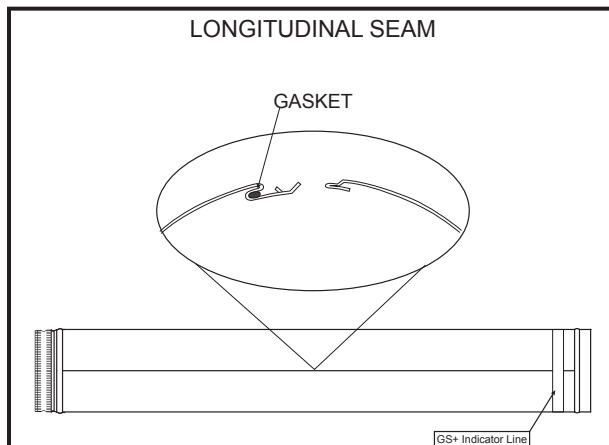
Items in green denote available options

Pre-Sealed Snap Lock Pipe

Gasket Specification

GREENSEAM⁺

complete factory sealed snap-lock pipe system



Longitudinal Gasket Composition

This material is made of butyl and E.P.D.M. rubbers, and proprietary co-polymer. It contains some process aids, antioxidants, fungicides, and adhesion promoters.

Test Data

Color: Black

Odor: None

Melt Point: Ball & Ring, 300° F

Slump: 3/8" Bd @ 250° F — no slump or sag.

Solids Content: 1 hour @ 350° F — 99.85% ASTM 771-74

Plasticizer Migration: ASTM C772-74; no bleed or stain.

Cold Temperature Flexibility: ASTM C765-73 — passes.

Water Resistance: ASTM D1056 — 0.01%

Shelf and Service Life: 20 years min.

Force to Compress: As measured when one cubic inch of 3/8" thick material is compressed to 3/16" thick material at 2" per min.

0° F — 60 psi

77° F — 30 psi

120° F — 15psi

Foamed at 50%

Aging Characteristics: ASTM D750-68 (1000 hrs.) on surface — slight haze

VOCs: 0

Surface Buring Characteristics: ASTM E-84 Test

Test Results: Flame Spread Index - 0

Smoke Developed Index - 30

Full test report available upon request

Transverse Gasket Composition

This material is a two-component polyurethane foamed gasket. The gasket is foamed directly onto the pipe by using FIPFG (formed-in-place foam gasket) technology. This produces a flexible tack-free foam gasket.

Test Data

Color: Black

Odor: None

Service Temperature: -40° F to 212° F

Tensile Strength: 290 psi

Elongation at Break: Up to 400 %

Shelf and Service Life: 20 years min.

VOCs: 0

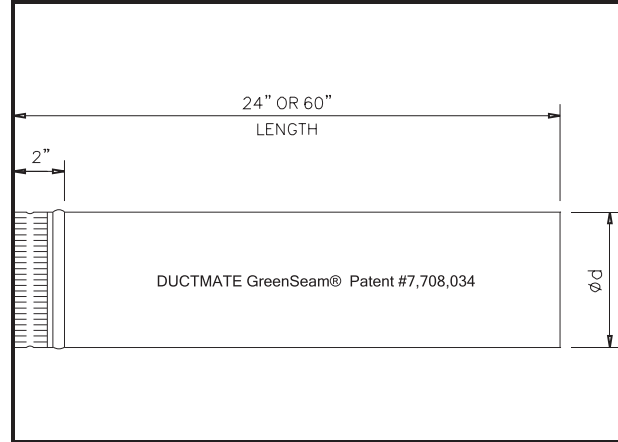
Surface Buring Characteristics: ASTM E-84 Test

Test Results: Flame Spread Index - 0

Smoke Developed Index - 0

Full test report available upon request

GreenSeam® Snap Lock Pipe



Technical Data

- Pre-sealed with gasket made of EPDM rubber and proprietary co-polymer
- Galvanized Steel (ASTM A653 and A924)
- G-60 Galvanized Coating (ASTM A653 and ASTM A90)
- Available in Specialty Metals:
 - Aluminum (ASTM B209 Alloy 3003 Temper H14)
 - 304 Stainless Steel (ASTM A480 2B Finish)
- Zero VOCs
- Pressure Rating: -1 w.g. to +2 w.g.
- SPBG - Button Lock Pipe meets SMACNA RL-8
- SPRG - Reeves Lock Pipe meets SMACNA RL-6A & 6B
- Exclusive technology: Patent #7,478,467 & Patent #7,708,034

Gauge & Lock Availability - 24" Lengths

Size (Ød)	Gauge						Quantity	
	28 Ga.		26 Ga.		24 Ga.		Bundle	Skid/Rack
	(B)*	(R)*	(B)*	(R)*	(B)*	(R)*		
4"	Yes	Yes	Yes	Yes	Yes	Yes	10	720
5"	Yes	Yes	Yes	Yes	Yes	Yes	10	490
6"	Yes	Yes	Yes	Yes	Yes	Yes	10	360
7"	Yes	Yes	Yes	Yes	Yes	Yes	10	220
8"	Yes	Yes	Yes	Yes	Yes	Yes	10	160
9"	Yes	Yes	Yes	Yes	Yes	Yes	10	140
10"	Yes	Yes	Yes	Yes	Yes	Yes	10	120
12"	Yes	Yes	Yes	Yes	Yes	Yes	10	90
14"	-	-	Yes	Yes	Yes	Yes	10	70

Gauge & Lock Availability - 60" Lengths

Size (Ød)	Gauge						Quantity	
	28 Ga.		26 Ga.		24 Ga.		Bundle	Skid/Rack
	(B)*	(R)*	(B)*	(R)*	(B)*	(R)*		
4"	Yes	Yes	Yes	Yes	Yes	Yes	5	355
5"	Yes	Yes	Yes	Yes	Yes	Yes	5	245
6"	Yes	Yes	Yes	Yes	Yes	Yes	5	150
7"	Yes	Yes	Yes	Yes	Yes	Yes	5	100
8"	Yes	Yes	Yes	Yes	Yes	Yes	5	100
9"	Yes	Yes	Yes	Yes	Yes	Yes	5	80
10"	Yes	Yes	Yes	Yes	Yes	Yes	5	60
12"	Yes	Yes	Yes	Yes	Yes	Yes	5	45
14"	-	-	Yes	Yes	Yes	Yes	5	30

Part Number Schematic

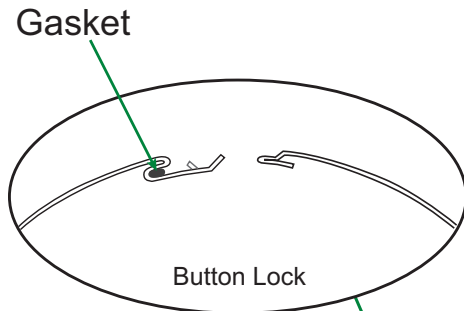
Example: **60SPBG10GA26** = 60" long, 10" round GreenSeam® Snap Pipe in 26Ga. Galvanized Steel

60 Pipe Length 24 - 2' 0" 60 - 5' 0" 48 - 4' 0" AL, S4 Only	SP Snap Pipe	B Lock Type B - Button R - Mod. Reeves	G GreenSeam	10 Pipe Diameter (Ød)	GA Material GA-Galvanized (Std.) AL - Aluminum, S4 - 304 S.S.	26 Gauge GA: 28, 26, 24 AL: 25, S4-26
-----------------------------------------------------------------------------------	------------------------	--------------------------------------------------------	-----------------------	---------------------------------	-------------------------------------------------------------------------------	-------------------------------------------------------

Items in green denote available options

Sealed Snap Lock Pipe

Gasket Specification



Composition

This material is made of butyl and E.P.D.M. rubbers, and proprietary co-polymer. It contains some process aids, antioxidants, fungicides, and adhesion promoters.

Test Data

Color: Black

Odor: None after curing

Melt Point: Ball & Ring, 300° F (149° C)

Slump: 3/8" Bd @ 250° F (121° C) – no slump or sag.

Solids Content: 1 hour @ 350° F (177° C) – 99.85%
ASTM 771-74

Plasticizer Migration: ASTM C772-74;
no bleed or stain.

Cold Temperature Flexibility: ASTM C765-73 – passes.

Water Resistance: ASTM D1056

unfoamed – 0.0%

foamed – .01%

Shelf and Service Life: 20 years min.

Force to Compress: As measured when one cubic inch of 3/8" thick material is compressed to 3/16" thick material at 2" per min.

0° F (-18° C) – 60 psi

77° F (25° C) – 30 psi

120° F (49° C) – 15psi

Foamed at 50%

Aging Characteristics: ASTM D750-68 (1000 hrs.) on surface – slight haze

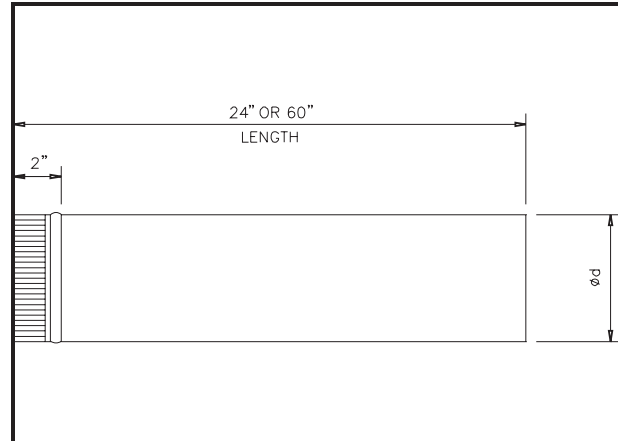
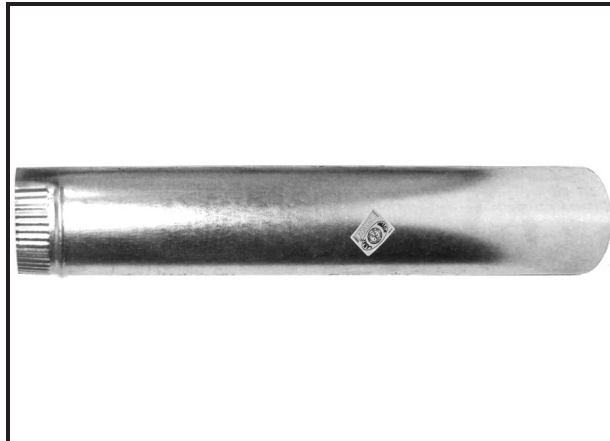
VOCs: 0

Surface Buring Characteristics: ASTM E-84 Test

Test Results: Flame Spread Index - 0

Smoke Developed Index - 30

Round Reeves Lock Snap Pipe



Technical Data

- Galvanized Steel (ASTM A653 and A924)
- G-60 Galvanized Coating (ASTM A653 and ASTM A90)
- Pressure Rating: -1 w.g. to +2 w.g.
- SPR - Reeves Lock Pipe meets SMACNA RL-6A&B
- Dimensional Tolerance: $\pm 1/4"$

Product Availability

Size (Ød)	24" Lengths	Quantity		60" Lengths	Quantity	
	24 (R)*	Bundle	Skid/Rack	24 (R)*	Bundle	Skid/Rack
16"	Yes	10	60	Yes	5	25
18"	Yes	10	50	Yes	5	20
20"	Yes	10	50	Yes	5	20
22"	‡	‡	‡	‡	‡	‡
24"	‡	‡	‡	‡	‡	‡

*(R) - Reeves Lock - ONLY (GreenSeam® is not available over 14").
 ‡ Consult factory for availability.

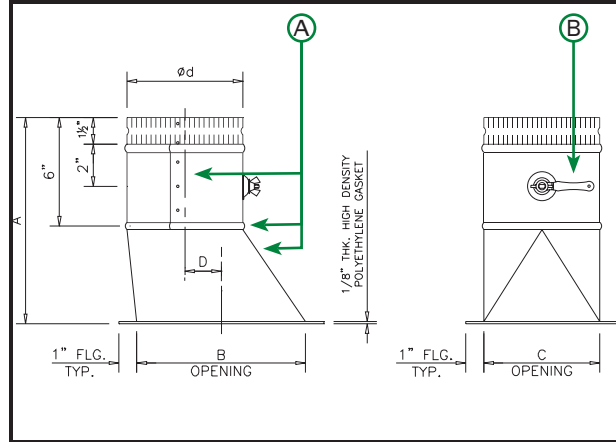
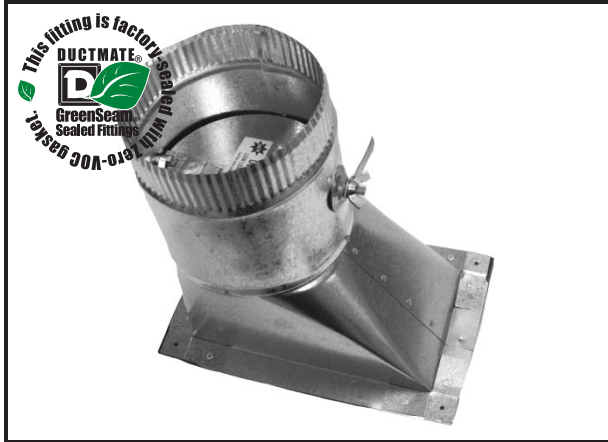
Part Number Schematic

Example: 60SPR16GA24 = 60" long, 16" round GreenSeam® Snap Pipe in 24Ga. Galvanized Steel

60 Pipe Length 24 - 2' 0" 60 - 5' 0" 48 - 4' 0" AL, S4 Only	SP Snap Pipe	R Lock Type R - Reeves	16 Pipe Diameter (Ød)	GA Material GA-Galvanized	24 Gauge GA: 24 AL: 25 S4: 26
----------------------------------------------------------------------------	-----------------	------------------------------	-----------------------------	---------------------------------	-------------------------------------------

Items in green denote available options

Straight-Sided High Efficiency Takeoff



Technical Data

- Pre-sealed with gasket made of EPDM rubber and proprietary co-polymer
- Zero VOCs
- Galvanized Steel (ASTM A653 and A924)
- G-60 Galvanized Coating (ASTM A653 and ASTM A90)
- Available in Specialty Metals:
 - G-90 Galvanized Steel
 - Aluminum (ASTM B209 Alloy 3003 Temper H14)
 - 304 Stainless Steel (ASTM A480 2B Finish)
- Pressure Rating: Designed per SMACNA Third Edition 2005 Section 4.8 Figure 4-6 Branch Connections
- Dimensional Tolerance: $\pm 1/4"$

A. HETOs now come standard with sealed joints! The riveted seam on the collar and boot, as well as the co-latch seam between the collar and boot are sealed with the GreenSeam integral gasket. Unsealed fittings are available upon request.

B. Non-dampered HETOs are supplied with a 3/8" knock-out. Dampered HETOs are supplied with 24GA. damper blades and Ductmate's proprietary low-leakage hardware. See Appendix A.

Product Availability								
Size (Ød)	Gauge Availability		Quantity		Dimension			
	26 Ga.	24 Ga.	Layer	Skid	A	B	C	D
4"	Yes	-	42	168	10 1/2"	7"	4"	1 1/2"
5"	Yes	Yes	36	144	10 1/2"	8"	5"	2 1/2"
6"	Yes	Yes	36	144	10 1/2"	9"	6"	2"
7"	Yes	Yes	20	100	10 1/2"	10"	7"	2"
8"	Yes	Yes	20	100	11 1/2"	11"	8"	2 1/2"
9"	Yes	Yes	20	100	11 1/2"	12"	9"	2 1/2"
10"	Yes	Yes	12	60	11 1/2"	12"	10"	2 1/2"
12"	Yes	Yes	9	45	11 1/2"	14"	12"	3"
14"	Yes	Yes	6	30	12"	16"	14"	3"
16"	-	Yes	4	20	13"	18"	16"	3"
18"	-	Yes	4	20	13"	20"	18"	3"
20"	-	Yes	4	20	14"	22"	20"	3"

Dampered fittings are available with 1 1/2" or 2" Stand-Off. See Appendix B on page 27.

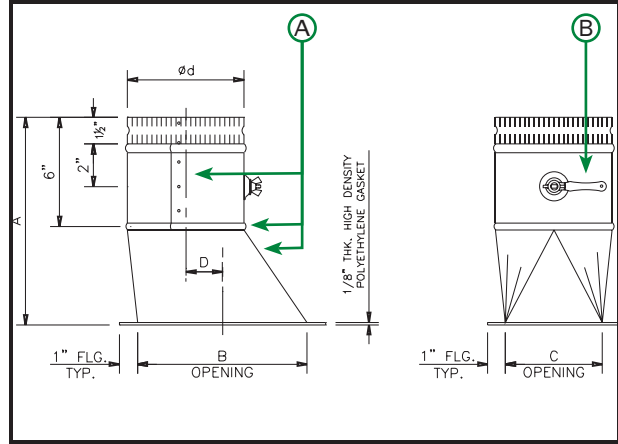
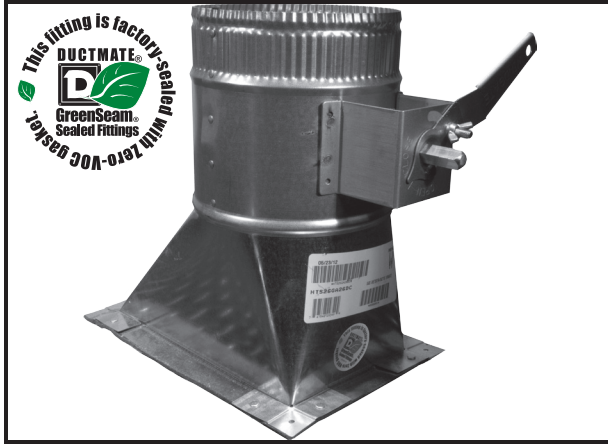
Part Number Schematic

Example: **SHTS1510GA26D38** = Straight HETO for 10" Pipe in 26Ga. Galvanized Steel, with a Solid Rod Damper and 1 1/2" Stand-Off

SHT Straight-Sided High Efficiency Take-Off	S15 Stand-Off S15 - 1 1/2" S2 - 2" (Opt. on Dampers Only)	10 Straight-Sided HETO Diameter (Ød)	GA Material GA-Galvanized (Std.) AL - Aluminum S4 - 304 S.S	26 Gauge GA - 26, 24 AL - 32 S4 - 26	D Damper (Opt.)	38 3/8" Solid Rod (Opt. on Dampers Only) See Appendix C on page 28.
-------------------------------------------------------	------------------------------------------------------------------------------	------------------------------------------------	--------------------------------------------------------------------------------	---------------------------------------------------------	---------------------------	----------------------------------------------------------------------------------

Items in green denote available options

Tapered High Efficiency Takeoff



Technical Data

- Pre-sealed with gasket made of EPDM rubber and proprietary co-polymer
- Zero VOCs
- Galvanized Steel (ASTM A653 and A924)
- G-60 Galvanized Coating (ASTM A653 and ASTM A90)
- Available in Specialty Metals:
 - G-90 Galvanized Steel
 - Aluminum (ASTM B209 Alloy 3003 Temper H14)
 - 304 Stainless Steel (ASTM A480 2B Finish)
- Pressure Rating: Designed per SMACNA Third Edition 2005 Section 4.8 Figure 4-6 Branch Connections
- Dimensional Tolerance: $\pm 1/4"$

A. HETOs now come standard with sealed joints! The riveted seam on the collar and boot, as well as the co-latch seam between the collar and boot are sealed with the GreenSeam integral gasket. Unsealed fittings are available upon request.

B. Non-dampered HETOs are supplied with a 3/8" knock-out. Dampered HETOs are supplied with 24GA. damper blades and Ductmate's proprietary low-leakage hardware. See Appendix A.

Product Availability								
Size (Ød)	Gauge Availability		Quantity		Dimension			
	26 Ga.	24 Ga.	Layer	Skid	A	B	C	D
4"	Yes	-	35	210	10 ½"	7"	4"	1 ½"
5"	Yes	Yes	30	180	10 ½"	9"	5"	2 ½"
6"	Yes	Yes	30	180	10 ½"	9"	5"	2"
7"	Yes	Yes	18	120	10 ½"	11	5	2 ½"
8"	Yes	Yes	20	120	11 ½"	12"	6"	2 ½"
9"	Yes	Yes	20	120	11 ½"	13"	7"	2 ½"
10"	Yes	Yes	12	72	11 ½"	14"	8"	2 ½"
12"	Yes	Yes	9	54	11 ½"	16"	10"	3"
14"	Yes	Yes	6	36	12"	18"	12"	3"
16"	-	Yes	4	24	13"	20"	14"	3"
18"	-	Yes	4	24	13"	22"	16"	3"
20"	-	Yes	4	24	13"	24	18	3"

Dampered fittings are available with 1½" or 2" Stand-Off. See Appendix B on page 27.

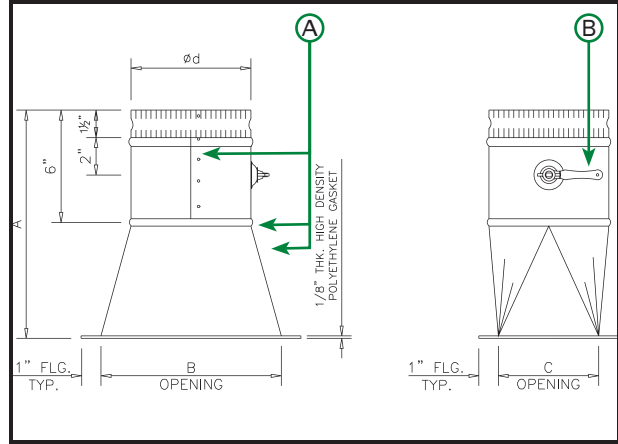
Part Number Schematic

Example: **HTS1510GA26D38** = Tapered HETO for 10" Pipe in 26Ga. Galvanized Steel, with a Solid Rod Damper and 1½" Stand-Off

HT Tapered High Efficiency Take-Off	S15 Stand-Off S15 - 1½" S2 - 2" (Opt. on Dampers Only)	10 Tapered HETO Diameter (Ød)	GA Material GA-Galvanized (Std.) AL - Aluminum S4 - 304 S.S	26 Gauge GA - 26, 24 AL - 32 S4 - 26	D Damper (Opt.)	38 3/8" Solid Rod (Opt. on Dampers Only) See Appendix C on page 28.
-----------------------------------------------	---------------------------------------------------------------------------	-----------------------------------------	--------------------------------------------------------------------------------	---------------------------------------------------------	---------------------------	----------------------------------------------------------------------------------

Items in green denote available options

Center High Efficiency Takeoff



Technical Data

- Pre-sealed with gasket made of EPDM rubber and proprietary co-polymer
- Zero VOCs
- Galvanized Steel (ASTM A653 and A924)
- G-60 Galvanized Coating (ASTM A653 and ASTM A90)
- Available in Specialty Metals:
 - G-90 Galvanized Steel
 - Aluminum (ASTM B209 Alloy 3003 Temper H14)
 - 304 Stainless Steel (ASTM A480 2B Finish)
- Pressure Rating: Designed per SMACNA Third Edition 2005 Section 4.8 Figure 4-6 Branch Connections
- Dimensional Tolerance: $\pm 1/4"$

A. HETOs now come standard with sealed joints! The riveted seam on the collar and boot, as well as the co-latch seam between the collar and boot are sealed with the GreenSeam integral gasket. Unsealed fittings are available upon request.

B. Non-dampered HETOs are supplied with a 3/8" knock-out. Dampered HETOs are supplied with 24GA. damper blades and Ductmate's proprietary low-leakage hardware. See Appendix A.

Product Availability

Size (Ød)	Gauge Availability		Quantity		Dimension		
	26 Ga.	24 Ga.	Layer	Skid	A	B	C
5"	Yes	Yes	24	144	10 1/2"	9"	5"
6"	Yes	Yes	30	144	11 1/2"	9"	5"
7"	Yes	Yes	18	100	11 1/2"	11"	5"
8"	Yes	Yes	20	100	11 1/2"	12"	6"
9"	Yes	Yes	20	100	11 1/2"	13"	7"
10"	Yes	Yes	12	60	11 1/2"	14"	8"
12"	Yes	Yes	9	45	11 1/2"	16"	10"
14"	Yes	Yes	6	30	12"	18"	12"
16"	-	Yes	4	20	13"	20"	14"
18"	-	Yes	4	20	13"	22"	16"
20"	-	Yes	4	20	13"	24"	18"

Dampered fittings are available with 1 1/2" or 2" Stand-Off. See Appendix B on page 27.

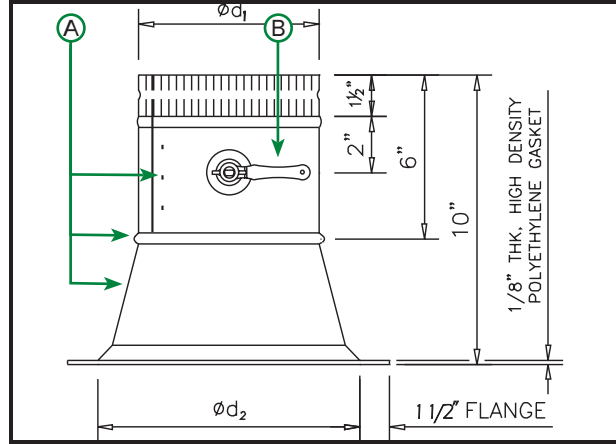
Part Number Schematic

Example: **HTCS1510GA26D38** = Center HETO for 10" Pipe in 26Ga. Galvanized Steel, with a Solid Rod Damper and 1 1/2" Stand-Off

HTC Center High Efficiency Take-Off	S15 Stand-Off S15 - 1 1/2" S2 - 2" (Opt. on Dampers Only)	10 Center HETO Diameter (Ød)	GA Material GA-Galvanized (Std.) AL - Aluminum S4 - 304 S.S.	26 Gauge GA - 26, 24 AL - 32 S4 - 26	D Damper (Opt.)	38 3/8" Solid Rod (Opt. on Dampers Only) See Appendix C on page 28.
--------------------------------------------------	---------------------------------------------------------------------------------	----------------------------------------------	------------------------------------------------------------------------------------	---------------------------------------------------------	---------------------------	----------------------------------------------------------------------------------------

Items in green denote available options

Press-On Conical



Technical Data

- Pre-sealed with gasket made of EPDM rubber and proprietary co-polymer
- Zero VOCs
- Galvanized Steel (ASTM A653 and A924)
- G-60 Galvanized Coating (ASTM A653 and ASTM A90)
- Available in Specialty Metals:
 - G-90 Galvanized Steel
 - Aluminum (ASTM B209 Alloy 3003 Temper H14)
 - 304 Stainless Steel (ASTM A480 2B Finish)
- Pressure Rating: Designed per SMACNA Third Edition 2005 Section 4.8 Figure 4-6 Branch Connections
- Dimensional Tolerance: $\pm 1/4"$

A. Conicals now come standard with sealed joints! The riveted seam on the collar and boot, as well as the co-latch seam between the collar and boot are sealed with the GreenSeam integral gasket. Unsealed fittings are available upon request.

B. Non-dampered conicals are supplied with a 3/8" knock-out. Dampered conicals are supplied with 24GA. damper blades and Ductmate's proprietary low-leakage hardware. See Appendix A.

Product Availability					
Size (ϕd_1)	Gauge Availability		Quantity		Dimension
	26 Ga.	24 Ga.	Carton	Skid	ϕd_2
4"	Yes	-	20	200	5 3/4"
5"	Yes	Yes	20	200	6 3/4"
6"	Yes	Yes	20	160	7 3/4"
7"	Yes	Yes	8	112	8 3/4"
8"	Yes	Yes	8	112	9 3/4"
9"	Yes	Yes	8	112	10 3/4"
10"	Yes	Yes	8	72	11 3/4"
12"	Yes	Yes	5	40	13 3/4"
14"	Yes	Yes	5	40	15 3/4"
16"	-	Yes	5	40	17 3/4"
18"	-	Yes	3	36	19 3/4"
20"	-	Yes	A/O	A/O	21 3/4"

Dampered fittings are available with 1 1/2" or 2" Stand-Off. See Appendix B on page 27.
A/O - As Ordered

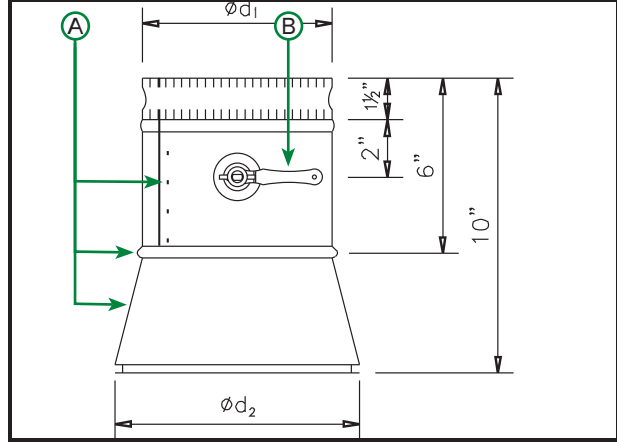
Part Number Schematic

Example: **CNS15PR10GA26D38** = Press-on Conical for 10" Pipe in 26Ga. Galvanized Steel, with a Solid Rod Damper and 1 1/2" Stand-Off

S Scoop (Opt.)	CN Conical	S15 Stand-Off S15 - 1 1/2" S2 - 2" (Opt. on Dampers Only)	P Press-On	R Riveted	10 Conical Diameter (ϕd_1)	GA Material GA-Galvanized (Std.) AL - Aluminum S4 - 304 S.S	26 Gauge GA - 26, 24 AL - 32 S4 - 26	D Damper (Opt.)	38 3/8" Solid Rod (Opt. on Dampers Only) See Appendix C on page 28.
-----------------------------	----------------------	------------------------------------------------------------------------------------	----------------------	---------------------	----------------------------------------------------	-----------------------------------------------------------------------------------	---------------------------------------------------------	------------------------------	-------------------------------------------------------------------------------------------

Items in green denote available options

Spin-In Conical



Technical Data

- Pre-sealed with gasket made of EPDM rubber and proprietary co-polymer
- Zero VOCs
- Galvanized Steel (ASTM A653 and A924)
- G-60 Galvanized Coating (ASTM A653 and ASTM A90)
- Available in Specialty Metals:
 - G-90 Galvanized Steel
 - Aluminum (ASTM B209 Alloy 3003 Temper H14)
 - 304 Stainless Steel (ASTM A480 2B Finish)
- Pressure Rating: Designed per SMACNA Third Edition 2005 Section 4.8 Figure 4-6 Branch Connections
- Dimensional Tolerance: $\pm 1/4"$

A. Conicals now come standard with sealed joints! The riveted seam on the collar and boot, as well as the co-latch seam between the collar and boot are sealed with the GreenSeam integral gasket. Unsealed fittings are available upon request.

B. Non-dampered conicals are supplied with a 3/8" knock-out. Dampered conicals are supplied with 24GA. damper blades and Ductmate's proprietary low-leakage hardware. See Appendix A.

Product Availability

Size (ϕd_1)	Gauge Availability		Quantity		Dimension
	26 Ga.	24 Ga.	Carton	Skid	ϕd_2
4"	Yes	-	10	280	5 3/4"
5"	Yes	Yes	10	280	6 3/4"
6"	Yes	Yes	20	256	7 3/4"
7"	Yes	Yes	20	160	8 3/4"
8"	Yes	Yes	20	160	9 3/4"
9"	Yes	Yes	10	140	10 3/4"
10"	Yes	Yes	8	112	11 3/4"
12"	Yes	Yes	8	72	13 3/4"
14"	Yes	Yes	5	64	15 3/4"
16"	-	Yes	5	40	17 3/4"
18"	-	Yes	5	40	19 3/4"
20"	-	Yes	3	36	21 3/4"

Dampered fittings are available with 1 1/2" or 2" Stand-Off. See Appendix B on page 27.

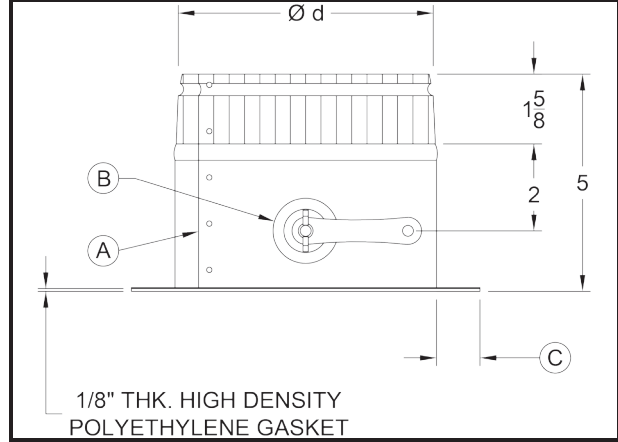
Part Number Schematic

Example: **CNS15R10GA26D38** = Spin-in Conical for 10" Pipe in 26Ga. Galvanized Steel, with a Solid Rod Damper and 1 1/2" Stand-Off

S Scoop (Opt.)	CN Spin-In Conical	S15 Stand-Off S15 - 1 1/2" S2 - 2" (Opt. on Dampers Only)	R Riveted	10 Conical Diameter (ϕd_1)	GA Material GA-Galvanized (Std.) AL - Aluminum S4 - 304 S.S	26 Gauge GA - 26, 24 AL - 32 S4 - 26	D Damper (Opt.)	38 3/8" Solid Rod (Opt. on Dampers Only) See Appendix C on page 28.
-----------------------------	---------------------------------	---------------------------------------------------------------------------------	---------------------	----------------------------------------------------	-----------------------------------------------------------------------------------	---------------------------------------------------------	------------------------------	-------------------------------------------------------------------------------------------

Items in green denote available options

Spun Press-On Collar



Technical Data

- Pre-sealed with gasket made of EPDM rubber and proprietary co-polymer
- Zero VOCs
- Galvanized Steel (ASTM A653 and A924)
- G-60 Galvanized Coating (ASTM A653 and ASTM A90)
- Available in Specialty Metals:
 - G-90 Galvanized Steel
 - Aluminum (ASTM B209 Alloy 3003 Temper H14)
 - 304 Stainless Steel (ASTM A480 2B Finish)
- Pressure Rating: Designed per SMACNA Third Edition 2005 Section 4.8 Figure 4-6 Branch Connections
- Dimensional Tolerance: $\pm 1/4$ "

A. Collars now come standard with sealed joints! The riveted seam is sealed with the GreenSeam integral gasket. Unsealed fittings are available upon request.

B. Non-dampened collars are supplied with a 3/8" knock-out. Dampened collars are supplied with 24GA. damper blades and Ductmate's proprietary low-leakage hardware. See Appendix A.

C. 7/8" flange for 4" and 5" collars. 1" flange for 6" and larger collars.

Product Availability

Size (Ød)*	Gauge Availability		Quantity	
	26 Ga.	24 Ga.	Carton	Skid
4"	Yes	-	25	700
5"	Yes	Yes	25	700
6"	Yes	Yes	20	320
7"	Yes	Yes	20	200
8"	Yes	Yes	20	200
9"	Yes	Yes	10	140
10"	Yes	Yes	10	140
12"	Yes	Yes	10	90
14"	Yes	Yes	5	80
16"	-	Yes	5	50
18"	-	Yes	5	50
20"	-	Yes	2	36

Dampened fittings are available with 1½" or 2" Stand-Off. See Appendix B on page 27.

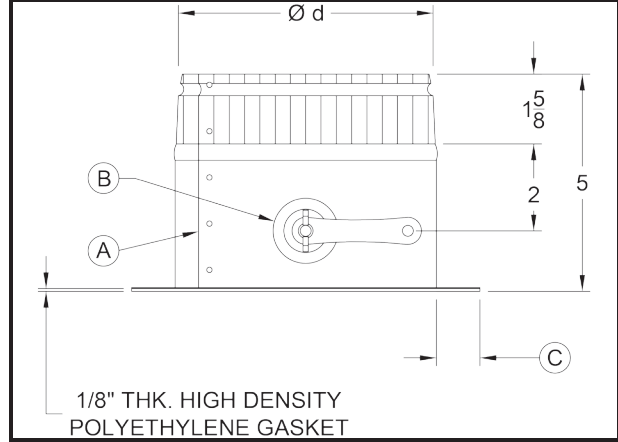
Part Number Schematic

Example: **6POS15CR10GA26D38** = Spun Press-on Collar for 10" Pipe in 26Ga. Galv. Steel, with a Solid Rod Damper and 1½" Stand-Off

S	6	PO	S15	C	R	10	GA	26	D	38
Scoop (Opt.)	Collar Length	Press-On Start Collar	Stand-Off S15 - 1½" S2 - 2" (Opt. on Dampers Only)	End C - Crimped (Std.)	Riveted	Collar Diameter (Ød)	Material GA - Galvanized (Std.) AL - Aluminum S4 - 304 S.S	Gauge 28 GA - 26, 24 AL - 32 S4 - 26	Damper (Opt.)	3/8" Solid Rod (Opt. on Dampers Only) See Appendix C on page 28.

Items in green denote available options

Spun Press-On Flex Collar



Technical Data

- Pre-sealed with gasket made of EPDM rubber and proprietary co-polymer
- Zero VOCs
- Galvanized Steel (ASTM A653 and A924)
- G-60 Galvanized Coating (ASTM A653 and ASTM A90)
- Available in Specialty Metals:
 - G-90 Galvanized Steel
 - Aluminum (ASTM B209 Alloy 3003 Temper H14)
 - 304 Stainless Steel (ASTM A480 2B Finish)
- Pressure Rating: Designed per SMACNA Third Edition 2005 Section 4.8 Figure 4-6 Branch Connections
- Dimensional Tolerance: $\pm 1/4"$

A. Collars now come standard with sealed joints! The riveted seam is sealed with the GreenSeam integral gasket. Unsealed fittings are available upon request.

B. Non-dampened collars are supplied with a 3/8" knock-out. Dampened collars are supplied with 24GA. damper blades and Ductmate's proprietary low-leakage hardware. See Appendix A.

C. 7/8" flange for 4" and 5" collars. 1" flange for 6" and larger collars.

Product Availability

Size (Ød)*	Gauge Availability		Quantity	
	26 Ga.	24 Ga.	Carton	Skid
4"	Yes	-	25	700
5"	Yes	Yes	20	700
6"	Yes	Yes	20	320
7"	Yes	Yes	20	200
8"	Yes	Yes	20	200
9"	Yes	Yes	10	140
10"	Yes	Yes	10	140
12"	Yes	Yes	10	90
14"	Yes	Yes	5	80
16"	-	Yes	5	50
18"	-	Yes	5	50
20"	-	Yes	2	36

* - Actual diameter is $-1/8"$ to allow for flex duct connection. Dampened fittings are available with 1 1/2" or 2" Stand-Off. See Appendix B on page 27.

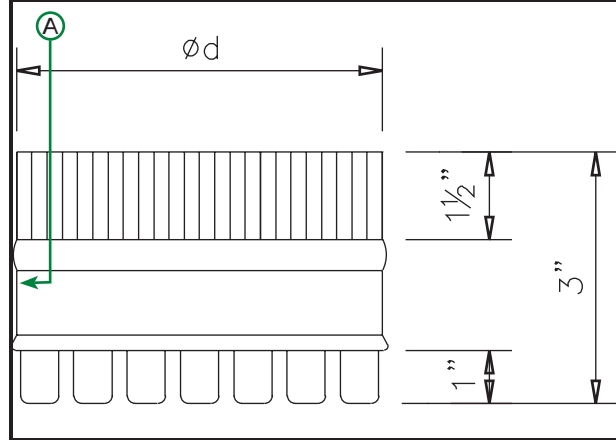
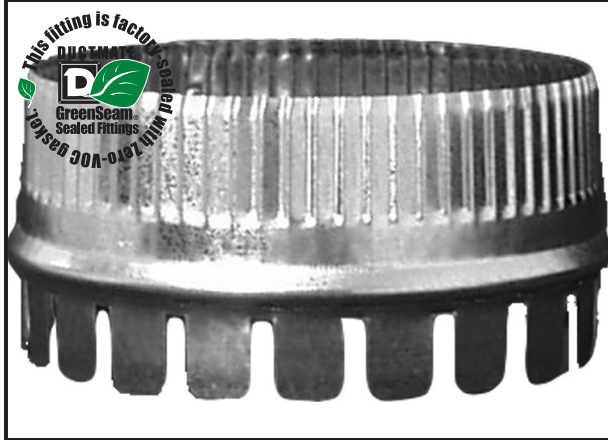
Part Number Schematic

Example: **6POS15FC10GA26D38** = Spun Press-on Flex Collar for 10" Pipe in 26Ga. Galv. Steel, with a Solid Rod Damper and 1 1/2" Stand-Off

S Scoop (Opt.)	6 Collar Length	PO Press-On Start Collar	S15 Stand-Off S15 - 1 1/2" S2 - 2" (Opt. on Dampers Only)	F Flex (Smaller Diameter for Flex Duct)	C End C - Crimped (Std.)	10 Collar Diameter (Ød)	GA Material GA-Galvanized (Std.) AL - Aluminum S4 - 304 S.S	26 Gauge 28 GA - 26, 24 AL - 32 S4 - 26	D Damper (Opt.)	38 3/8" Solid Rod (Opt. on Dampers Only) See Appendix C on page 28.
-----------------------------	------------------------------	------------------------------------------	------------------------------------------------------------------------------------	------------------------------------------------------------	------------------------------------------	-----------------------------------------	-----------------------------------------------------------------------------------	------------------------------------------------------------	------------------------------	-------------------------------------------------------------------------------------------

Items in green denote available options

3" Long Tabbed Start Collar



Technical Data

- Pre-sealed with gasket made of EPDM rubber and proprietary co-polymer
- Zero VOCs
- Galvanized Steel (ASTM A653 and A924)
- G-60 Galvanized Coating (ASTM A653 and ASTM A90)
- Available in Specialty Metals:
 - G-90 Galvanized Steel
 - Aluminum (ASTM B209 Alloy 3003 Temper H14)
 - 304 Stainless Steel (ASTM A480 2B Finish)
- Pressure Rating: Designed per SMACNA Third Edition 2005 Section 4.8 Figure 4-6 Branch Connections
- Dimensional Tolerance: $\pm 1/4"$

A. Collars now come standard with sealed joints! The riveted seam is sealed with the GreenSeam integral gasket. Unsealed fittings are available upon request.

Product Availability

Size (∅d)	Gauge Availability		Quantity	
	26 Ga.	24 Ga.	Carton	Skid
4"	Yes	-	30	840
5"	Yes	Yes	30	840
6"	Yes	Yes	25	700
7"	Yes	Yes	25	700
8"	Yes	Yes	25	700
9"	Yes	Yes	20	560
10"	Yes	Yes	20	560
12"	Yes	Yes	20	280
14"	Yes	Yes	10	160
16"	-	Yes	10	160
18"	-	Yes	10	100
20"	-	Yes	10	100
22"	-	‡	‡	‡
24"	-	‡	‡	‡

‡ Consult factory for availability.

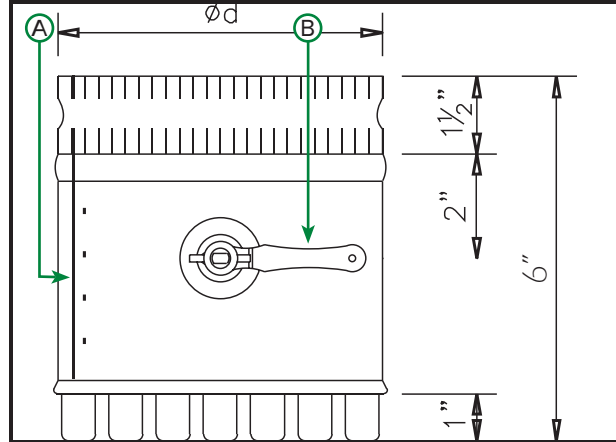
Part Number Schematic

Example: **3SCCR10GA26** = 3" Long Tabbed Collar for 10" Pipe in 26Ga. Galvanized Steel

3	SC	C	R	10	GA	26
Collar Length	Tabbed Start Collar	End C - Crimped (Std.)	Riveted	Collar Diameter (∅d)	Material GA - Galvanized (Std.) AL - Aluminum S4 - 304 S.S.	Gauge 28 GA - 26, 24 AL - 32 S4 - 26

Items in green denote available options

6" Long Tabbed Start Collar



Technical Data

- Pre-sealed with gasket made of EPDM rubber and proprietary co-polymer
- Zero VOCs
- Galvanized Steel (ASTM A653 and A924)
- G-60 Galvanized Coating (ASTM A653 and ASTM A90)
- Available in Specialty Metals:
 - G-90 Galvanized Steel
 - Aluminum (ASTM B209 Alloy 3003 Temper H14)
 - 304 Stainless Steel (ASTM A480 2B Finish)
- Pressure Rating: Designed per SMACNA Third Edition 2005 Section 4.8 Figure 4-6 Branch Connections
- Dimensional Tolerance: $\pm 1/4"$

A. Collars now come standard with sealed joints! The riveted seam is sealed with the GreenSeam integral gasket. Unsealed fittings are available upon request.

B. Non-dampened collars are supplied with a 3/8" knock-out. Dampened collars are supplied with 24GA. damper blades and Ductmate's proprietary low-leakage hardware. See Appendix A.

Product Availability

Size (Ød)	Gauge Availability		Quantity	
	26 Ga.	24 Ga.	Carton	Skid
4"	Yes	-	30	840
5"	Yes	Yes	30	840
6"	Yes	Yes	20	560
7"	Yes	Yes	25	400
8"	Yes	Yes	20	320
9"	Yes	Yes	20	200
10"	Yes	Yes	20	200
12"	Yes	Yes	10	140
14"	Yes	Yes	10	90
16"	-	Yes	5	80
18"	-	Yes	5	50
20"	-	Yes	5	50
22"	-	‡	5	‡
24"	-	‡	5	‡

‡ Consult factory for availability.

Dampened fittings are available with 1 1/2" or 2" Stand-Off. See Appendix B on page 27.

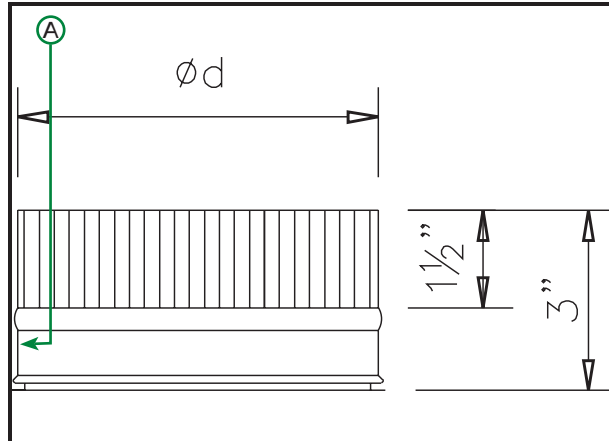
Part Number Schematic

Example: **6SCS15CR10GA26D38** = 6" Long Tabbed Collar for 10" Pipe in 26Ga. Galv. Steel, with a Solid Rod Damper and 1 1/2" Stand-Off

6 Collar Length	SC Tabbed Start Collar	S15 Stand-Off S15 - 1 1/2" S2 - 2" (Opt. on Dampers Only)	C End C - Crimped (Std.)	R Riveted	10 Collar Diameter (Ød)	GA Material GA-Galvanized (Std.) AL - Aluminum S4 - 304 S.S	26 Gauge 28 GA - 26, 24 AL - 32 S4 - 26	D Damper (Opt.)	38 3/8" Solid Rod (Opt. on Dampers Only) See Appendix C on page 28.
-----------------------	---------------------------------	-----------------------------------------------------------------------------	-----------------------------------	--------------	----------------------------------	----------------------------------------------------------------------------	-----------------------------------------------------	-----------------------	---------------------------------------------------------------------------------------

Items in green denote available options

3" Long Spin-In Collar



Technical Data

- Pre-sealed with gasket made of EPDM rubber and proprietary co-polymer
- Zero VOCs
- Galvanized Steel (ASTM A653 and A924)
- G-60 Galvanized Coating (ASTM A653 and ASTM A90)
- Available in Specialty Metals:
 - G-90 Galvanized Steel
 - Aluminum (ASTM B209 Alloy 3003 Temper H14)
 - 304 Stainless Steel (ASTM A480 2B Finish)
- Pressure Rating: Designed per SMACNA Third Edition 2005 Section 4.8 Figure 4-6 Branch Connections
- Dimensional Tolerance: $\pm 1/4"$

A. Collars now come standard with sealed joints! The riveted seam is sealed with the GreenSeam integral gasket. Unsealed fittings are available upon request.

Product Availability

Size (Ød)	Gauge Availability		Quantity	
	26 Ga.	24 Ga.	Carton	Skid
4"	Yes	-	30	840
5"	Yes	Yes	30	840
6"	Yes	Yes	25	700
7"	Yes	Yes	25	700
8"	Yes	Yes	25	700
9"	Yes	Yes	20	560
10"	Yes	Yes	20	560
12"	Yes	Yes	20	280
14"	Yes	Yes	10	160
16"	-	Yes	10	160
18"	-	Yes	10	100
20"	-	Yes	10	100
22"	-	‡	‡	‡
24"	-	‡	‡	‡

‡ Consult factory for availability.

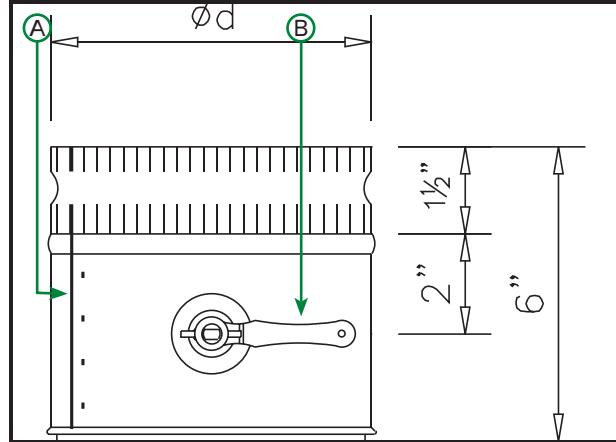
Part Number Schematic

Example: **S3SICR10GA26** = 3" Long Spin-in Collar for 10" Pipe in 26Ga. Galvanized Steel with a Crimped End and a Scoop

S Scoop (Opt.)	3 Collar Length	SI Spin-in Start Collar	C End C - Crimped (Std.)	R Riveted	10 Collar Diameter (Ød)	GA Material GA-Galvanized (Std.) AL - Aluminum S4 - 304 S.S	26 Gauge 28 GA - 26, 24 AL - 32 S4 - 26
----------------------	--------------------	-------------------------------	-----------------------------------	--------------	----------------------------------	-------------------------------------------------------------------------	-----------------------------------------------------

Items in green denote available options

6" Long Spin-In Collar



Technical Data

- Pre-sealed with gasket made of EPDM rubber and proprietary co-polymer
- Zero VOCs
- Galvanized Steel (ASTM A653 and A924)
- G-60 Galvanized Coating (ASTM A653 and ASTM A90)
- Available in Specialty Metals:
 - G-90 Galvanized Steel
 - Aluminum (ASTM B209 Alloy 3003 Temper H14)
 - 304 Stainless Steel (ASTM A480 2B Finish)
- Pressure Rating: Designed per SMACNA Third Edition 2005 Section 4.8 Figure 4-6 Branch Connections
- Dimensional Tolerance: $\pm 1/4"$

A. Collars now come standard with sealed joints! The riveted seam is sealed with the GreenSeam integral gasket. Unsealed fittings are available upon request.

B. Non-dampened collars are supplied with a 3/8" knock-out. Dampened collars are supplied with 24GA. damper blades and Ductmate's proprietary low-leakage hardware. See Appendix A.

Product Availability

Size ($\varnothing d$)			Quantity	
	26 Ga.	24 Ga.	Carton	Skid
4"	Yes	-	30	840
5"	Yes	Yes	30	840
6"	Yes	Yes	20	560
7"	Yes	Yes	25	400
8"	Yes	Yes	20	320
9"	Yes	Yes	20	200
10"	Yes	Yes	20	200
12"	Yes	Yes	10	140
14"	Yes	Yes	10	90
16"	-	Yes	5	80
18"	-	Yes	5	50
20"	-	Yes	‡	‡
22"	-	‡	‡	‡
24"	-	‡	‡	‡

‡ Consult factory for availability.

Dampened Fittings are available with 1 1/2" or 2" Stand-Off. See Appendix B on page 27.

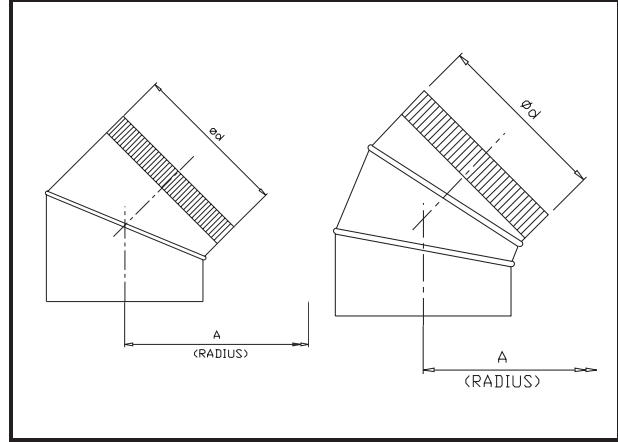
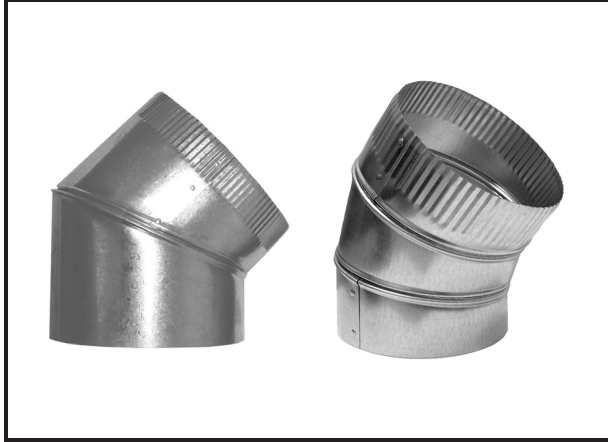
Part Number Schematic

Example: **S6SIS15CR10GA26D38** = 6" Long Spin-in Collar for 10" Pipe in 26Ga. Galv. Steel, with a Solid Rod Damper, 1 1/2" Stand-Off, Crimped End, and a Scoop.

S	6	SI	S15	C	R	10	GA	26	D	38
Scoop (Opt.)	Collar Length	Spin-in Start Collar	Stand-Off S15 - 1 1/2" S2 - 2" (Opt. on Dampers Only)	End C - Crimped (Std.)	Riveted	Collar Diameter ($\varnothing d$)	Material GA - Galvanized (Std.) AL - Aluminum S4 - 304 S.S	Gauge 28 GA - 26, 24 AL - 32 S4 - 26	Damper (Opt.)	3/8" Solid Rod (Opt. on Dampers Only) See Appendix C on page 28.

Items in green denote available options

45° Adjustable Elbow



Technical Data	
•	Galvanized Steel (ASTM A653 and A924)
•	G-60 Galvanized Coating (ASTM A653 and ASTM A90)
•	Available in Specialty Metals:
•	Aluminum (ASTM B209 Alloy 3003 Temper H14)
•	304 Stainless Steel (ASTM A480 2B Finish)
•	Pressure Rating: -1" wg - +2" wg
•	Dimensional Tolerance: ± 1/4"

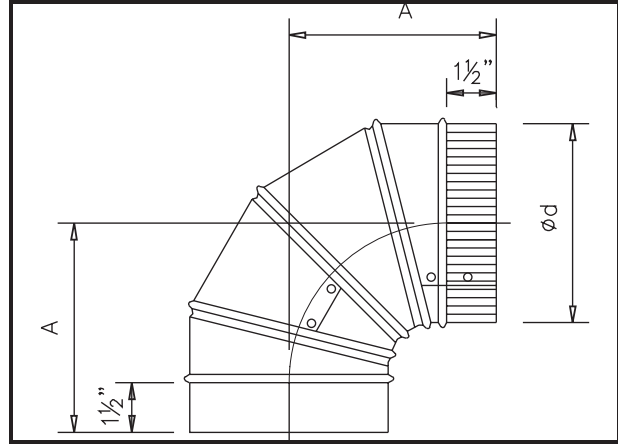
Product Availability						
	Size (Ød)	Gauge Availability		Quantity		Dimension
		26 Ga.	24 Ga.	Bundle	Skid	A
3 Piece Elbows	4"	Yes	Yes	24	1152	6
	5"	Yes	Yes	24	864	7 ½"
	6"	Yes	Yes	24	432	9"
	7"	Yes	Yes	24	288	10 ½"
	8"	Yes	Yes	24	192	12"
2 Piece Elbows	9"	Yes	Yes	24	192	9"
	10"	Yes	Yes	24	192	10"
	12"	Yes	Yes	24	160	12"
	14"	Yes	Yes	16	128	14"
	16"	-	Yes	16	32	16"
	18"	-	Yes	8	24	18"
	20"	-	Yes	8	24	20"
	22"	-	‡	8	24	22"
24"	-	‡	8	24	24"	

‡ Consult factory for availability.

Part Number Schematic					
Example: AEC845GA26 = 45° Adjustable Elbow for 8" Pipe in 26Ga. Galvanized Steel with Both Ends Crimped					
AE Adjustable Elbow	C Crimp Both Ends (Opt. Special Order)	8 Elbow Diameter (Ød)	45 45° Elbow	GA Material GA-Galvanized (Std.) AL - Aluminum S4 - 304 S.S.	26 Gauge 28 GA - 26, 24 AL - 32 S4 - 26

Items in green denote available options

90° Adjustable Elbow



Technical Data

- Galvanized Steel (ASTM A653 and A924)
- G-60 Galvanized Coating (ASTM A653 and ASTM A90)
- Available in Specialty Metals:
 - Aluminum (ASTM B209 Alloy 3003 Temper H14)
 - 304 Stainless Steel (ASTM A480 2B Finish)
- Pressure Rating: -1" wg - +2" wg
- Dimensional Tolerance: $\pm 1/4"$

Product Availability

Size (Ød)	Gauge Availability		Quantity		Dimension
	26 Ga.	24 Ga.	Bundle	Skid	A
3"	Yes	Yes	12	720	4 1/2"
4"	Yes	Yes	12	576	4 3/4"
5"	Yes	Yes	12	432	5 1/2"
6"	Yes	Yes	12	216	6"
7"	Yes	Yes	12	144	6 1/2"
8"	Yes	Yes	12	144	7"
9"	Yes	Yes	12	96	8 1/2"
10"	Yes	Yes	12	96	9"
12"	Yes	Yes	12	96	10"
14"	Yes	Yes	8	80	10 1/2"
16"	-	Yes	8	64	12"
18"	-	Yes	4	16	14"
20"	-	Yes	4	12	15"
22"	-	‡	4	12	‡
24"	-	‡	4	12	‡

‡ Consult factory for availability.

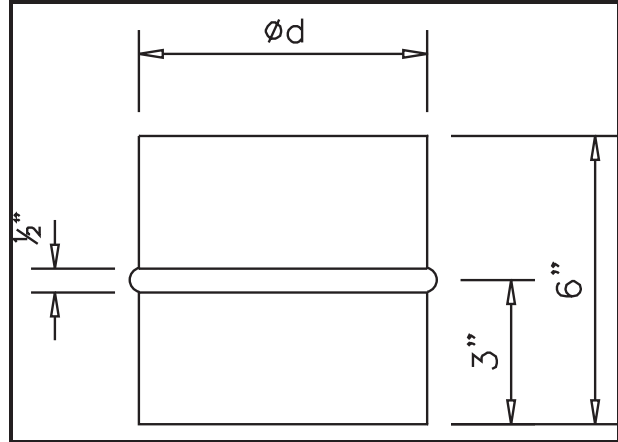
Part Number Schematic

Example: **AEC890GA26** = 90° Adjustable Elbow for 8" Pipe in 26Ga. Galvanized Steel with Both Ends Crimped

AE	C	8	90	GA	26
Adjustable Elbow	Crimp Both Ends (Opt. Special Order)	Elbow Diameter (Ød)	90° Elbow	Material GA-Galvanized (Std.) AL - Aluminum S4 - 304 S.S	Gauge 28 GA - 26, 24 AL - 32 S4 - 26

Items in green denote available options

6" Long Coupler



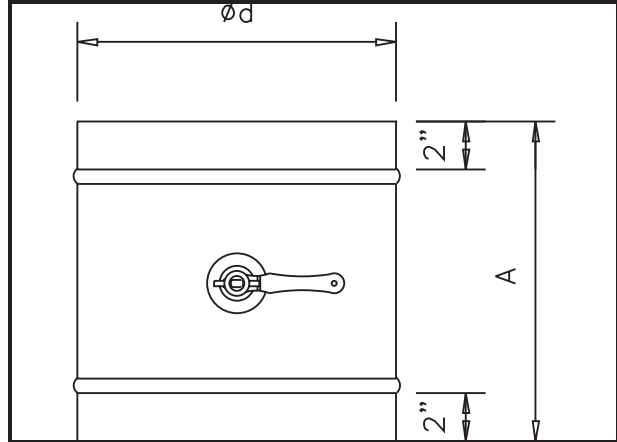
Technical Data	
• Galvanized Steel (ASTM A653 and A924)	
• G-60 Galvanized Coating (ASTM A653 and ASTM A90)	
• Available in Specialty Metals:	
• Aluminum (ASTM B209 Alloy 3003 Temper H14)	
• 304 Stainless Steel (ASTM A480 2B Finish)	
• Pressure Rating: Designed per SMACNA Third Edition 2005 Section 4.8 Figure 4-6 Branch Connections	
• Dimensional Tolerance: $\pm 1/4"$	

Product Availability				
Size (Ød)	Gauge Availability		Quantity	
	26 Ga.	24 Ga.	Carton	Skid
6"	Yes	Yes	20	560
7"	Yes	Yes	20	320
8"	Yes	Yes	20	320
9"	Yes	Yes	20	200
10"	Yes	Yes	20	200
12"	Yes	Yes	10	140
14"	Yes	Yes	5	80

Part Number Schematic						
Example: 6COPR10GA26 = 6" Long Coupler for 10" Pipe in 26Ga. Galvanized Steel with Plain Ends.						
6 Coupler Length	CO Coupler	P Plain End (Crimping Unavailable)	R Riveted	10 Coupler Diameter (Ød)	GA Material GA-Galvanized (Std.) AL - Aluminum S4 - 304 S.S	26 Gauge GA - 26, 24 AL - 32 S4 - 26

Items in green denote available options

8" Long Coupler



Technical Data	
• Galvanized Steel (ASTM A653 and A924)	
• G-60 Galvanized Coating (ASTM A653 and ASTM A90)	
• Available in Specialty Metals:	
• Aluminum (ASTM B209 Alloy 3003 Temper H14)	
• 304 Stainless Steel (ASTM A480 2B Finish)	
• Pressure Rating: Designed per SMACNA Third Edition 2005 Section 4.8 Figure 4-6 Branch Connections	
• Dimensional Tolerance: $\pm 1/4"$	

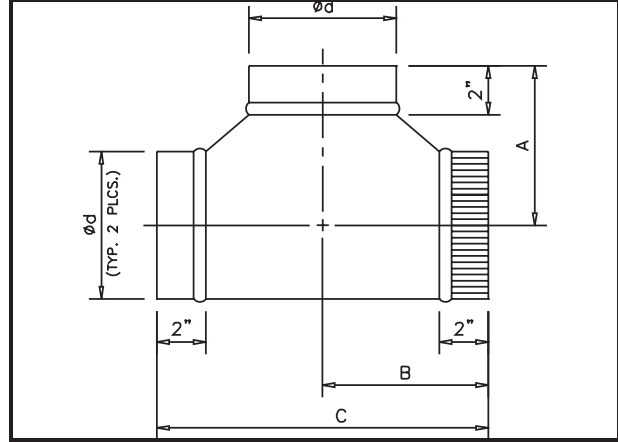
Product Availability				
Size ($\varnothing d$)	Gauge Availability		Quantity	
	26 Ga.	24 Ga.	Carton	Skid
6"	Yes	Yes	10	280
7"	Yes	Yes	12	192
8"	Yes	Yes	12	192
9"	Yes	Yes	12	120
10"	Yes	Yes	12	120
12"	Yes	Yes	6	84
14"	Yes	Yes	6	54

Dampened fittings are available with 1½" or 2" Stand-Off. See Appendix B on page 27.

Part Number Schematic									
Example: 8COPR10GA26D = 8" Long Coupler for 10" pipe in 26Ga. Galvanized Steel with a Damper.									
8 Coupler Length	CO Tabbed Start Collar	S15 Stand-Off S15 - 1½" S2 - 2" (Opt. on Dampers Only)	P Plain End (Crimping Unavailable)	R Riveted	10 Coupler Diameter ($\varnothing d$)	GA Material GA-Galvanized (Std.) AL - Aluminum S4 - 304 S.S	26 Gauge GA - 26, 24 AL - 32 S4 - 26	D Damper (Opt.)	38 3/8" Solid Rod (Opt. on Dampers Only) See Appendix C on page 28.

Items in green denote available options

Free Flowing Tee



Technical Data

- Galvanized Steel (ASTM A653 and A924)
- G-60 Galvanized Coating (ASTM A653 and ASTM A90)
- Available in Specialty Metals:
 - Aluminum (ASTM B209 Alloy 3003 Temper H14)
 - 304 Stainless Steel (ASTM A480 2B Finish)
- Pressure Rating: Designed per SMACNA Third Edition 2005 Section 4.8 Figure 4-6 Branch Connections
- Dimensional Tolerance: $\pm 1/4"$

Product Availability

Size (Ød)*	Gauge Availability		Quantity		Dimension		
	26 Ga.	24 Ga.	Carton	Skid	A	B	C
4"	Yes	-	20	400	6"	5¼"	10½"
5"	Yes	Yes	15	135	6½"	12⅛"	14⅞"
6"	Yes	Yes	15	135	6½"	6½"	13"
7"	Yes	Yes	8	72	7½"	7¼"	14½"
8"	Yes	Yes	8	72	8⅞"	8 ⅛"	15¾"
9"	Yes	Yes	4	48	9"	8 "	16¾"
10"	Yes	Yes	4	48	9⅞"	10"	20"
12"	Yes	Yes	2	18	10¾"	10¾"	21½"

* Tee Joint Sizes 3" and 14"-20" are available in 90° Tee Joint (pg. 23)

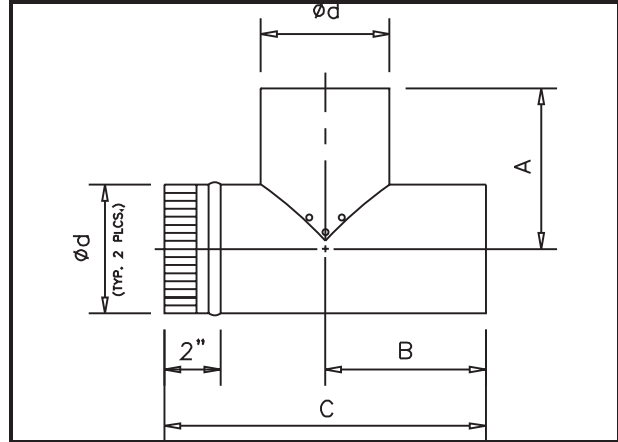
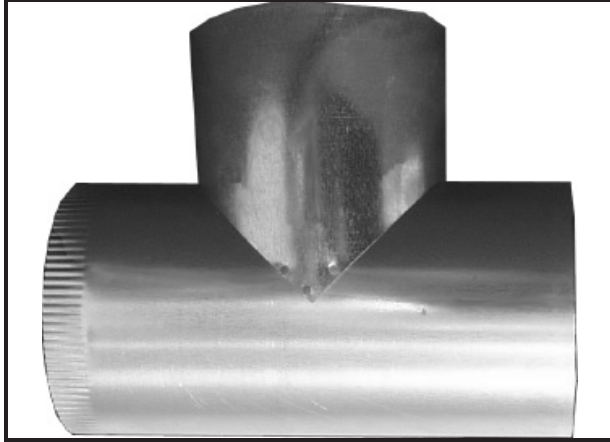
Part Number Schematic

Example: **FTJ10GA26** = Free-Flow Tee Joint for 10" Pipe in 26Ga. Galvanized Steel

F	TJ	10	GA	26
Free-Flow	Tee Joint	Tee Diameter (Ød)	Material GA - Galvanized (Std.) AL - Aluminum S4 - 304 S.S.	Gauge GA - 26, 24 AL - 32 S4 - 26

Items in green denote available options

90° Tee Joint



Technical Data

- Galvanized Steel (ASTM A653 and A924)
- G-60 Galvanized Coating (ASTM A653 and ASTM A90)
- Available in Specialty Metals:
 - Aluminum (ASTM B209 Alloy 3003 Temper H14)
 - 304 Stainless Steel (ASTM A480 2B Finish)
- Pressure Rating: Designed per SMACNA Third Edition 2005 Section 4.8 Figure 4-6 Branch Connections
- Dimensional Tolerance: $\pm 1/4"$

Product Availability

Size (Ød)*	Gauge Availability		Quantity		Dimension		
	26 Ga.	24 Ga.	Carton	Skid	A	B	C
3"	Yes	-	20	400	5"	4½"	9"
14"	Yes	Yes	1	12	11"	9½"	19"
16"	-	Yes	1	12	12"	12"	24"
18"	-	Yes	1	6	15"	15"	30"
20"	-	Yes	1	6	18"	16"	32"

* Tee Joint Sizes 4" - 12" are available in Free-Flow Tee Joint (pg. 22)

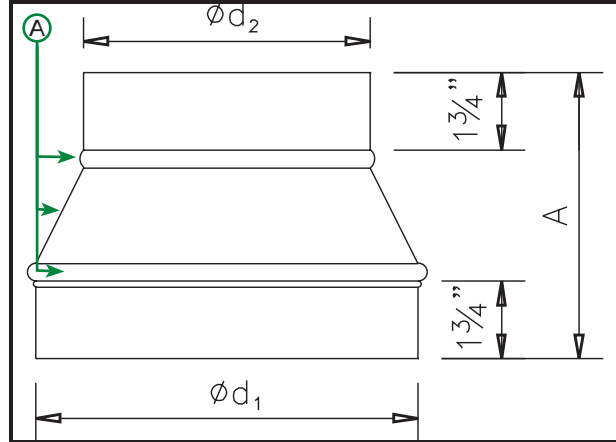
Part Number Schematic

Example: **TJ10GA26** = Tee Joint for 14" Pipe in 26Ga. Galvanized Steel

F	TJ	14	GA	26
Free-Flow	Tee Joint	Tee Diameter (Ød)	Material GA - Galvanized (Std.) AL - Aluminum S4 - 304 S.S	Gauge GA - 26, 24 AL - 32 S4 - 26

Items in green denote available options

Reducers



Technical Data

- Galvanized Steel (ASTM A653 and A924)
- G-60 Galvanized Coating (ASTM A653 and ASTM A90)
- Available in Specialty Metals:
 - Aluminum (ASTM B209 Alloy 3003 Temper H14)
 - 304 Stainless Steel (ASTM A480 2B Finish)
- Pressure Rating: Designed per SMACNA Third Edition 2005 Section 4.8 Figure 4-6 Branch Connections
- Dimensional Tolerance: $\pm 1/4"$

Product Availability

Size	Ga. Availability		Quantity		Dimension	Size	Ga. Availability		Quantity		Dimension
	26 Ga.	24 Ga.	Carton	Skid	A		26 Ga.	24 Ga.	Carton	Skid	A
4" x 3"	Yes	Yes	28	336	6 ³ / ₄ "	10" x 7"	Yes	Yes	10	120	6 ³ / ₄ "
5" x 3"	Yes	Yes	28	336	6 ³ / ₄ "	10" x 9"	Yes	Yes	10	120	6"
5" x 4"	Yes	Yes	28	336	6 ¹ / ₄ "	12" x 6"	Yes	Yes	20	168	9 ¹ / ₂ "
6" x 3"	Yes	Yes	28	336	7"	12" x 7"	Yes	Yes	20	168	9"
6" x 4"	Yes	Yes	28	336	7"	12" x 8"	Yes	Yes	20	168	8 ¹ / ₈ "
6" x 5"	Yes	Yes	28	336	5 ⁵ / ₈ "	12" x 9"	Yes	Yes	20	168	7"
7" x 3"	Yes	Yes	16	192	5 ¹³ / ₁₆ "	12" x 10"	Yes	Yes	20	168	6"
7" x 4"	Yes	Yes	16	192	6"	14" x 10"	Yes	Yes	16	192	8"
7" x 5"	Yes	Yes	16	192	6"	14" x 12"	Yes	Yes	16	192	6"
7" x 6"	Yes	Yes	16	192	6 ¹ / ₄ "	16" x 10"	-	Yes	16	192	6 ³ / ₄ "
8" x 5"	Yes	Yes	16	192	7"	16" x 12"	-	Yes	16	192	7 ¹ / ₂ "
8" x 6"	Yes	Yes	16	192	6"	16" x 14"	-	Yes	16	192	6"
8" x 7"	Yes	Yes	16	192	6 ¹ / ₄ "	18" x 14"	-	Yes	10	120	7 ¹ / ₂ "
9" x 5"	Yes	Yes	10	120	6 ¹¹ / ₁₆ "	18" x 16"	-	Yes	10	120	7 ³ / ₄ "
9" x 6"	Yes	Yes	10	120	7"	20" x 14"	-	‡	5	60	9 ¹ / ₂ "
9" x 7"	Yes	Yes	10	120	6"	20" x 16"	-	‡	5	60	9 ³ / ₄ "
9" x 8"	Yes	Yes	10	120	6 ¹ / ₄ "	20" x 18"	-	‡	5	60	6"
10" x 6"	Yes	Yes	10	120	7 ¹ / ₂ "	‡ Consult factory for availability					

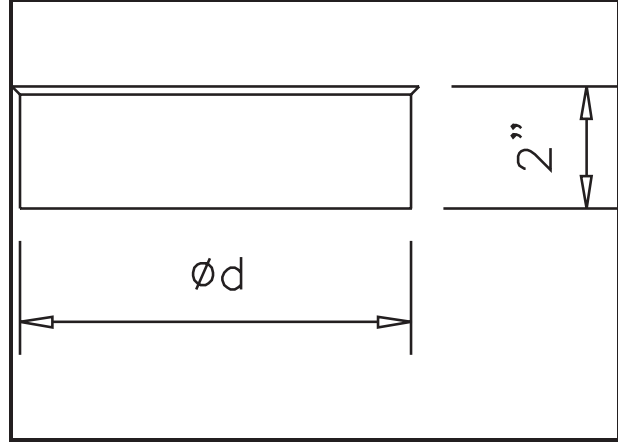
Part Number Schematic

Example: **R4P3PGA26** = Reducer with a 4" Plain large end and a 3" Plain small end in 26 Ga. Galvanized Steel

R	4	P	3	P	GA	26
Reducer	Large End Diameter (Ød1)	Large End C - Crimped (Std.) P - Plain (Opt.)	Small End Diameter (Ød2)	Small End C - Crimped (Std.) P - Plain (Opt.)	Material GA-Galvanized (Std.) AL - Aluminum S4 - 304 S.S.	Gauge GA - 26, 24 AL - 32 S4 - 26

Items in green denote available options

End Caps



Technical Data

- Galvanized Steel (ASTM A653 and A924)
- G-60 Galvanized Coating (ASTM A653 and ASTM A90)
- Available in Specialty Metals:
 - Aluminum (ASTM B209 Alloy 3003 Temper H14)
 - 304 Stainless Steel (ASTM A480 2B Finish)
- Pressure Rating: Designed per SMACNA Third Edition 2005 Section 4.8 Figure 4-6 Branch Connections
- Dimensional Tolerance: $\pm 1/4"$

Product Availability

Size (Ød)	Gauge Availability		Quantity	
	26 Ga.	24 Ga.	Carton	Skid
3"	Yes	-	30	840
4"	Yes	Yes	25	700
5"	Yes	Yes	25	700
6"	Yes	Yes	25	700
7"	Yes	Yes	25	700
8"	Yes	Yes	25	700
9"	Yes	Yes	40	480
10"	Yes	Yes	40	480
12"	Yes	Yes	20	280
14"	Yes	Yes	20	280
16"	-	Yes	10	160
18"	-	Yes	10	100
20"	-	Yes	10	120
22"	-	‡	‡	‡
24"	-	‡	‡	‡

‡ Consult factory for availability.

Part Number Schematic

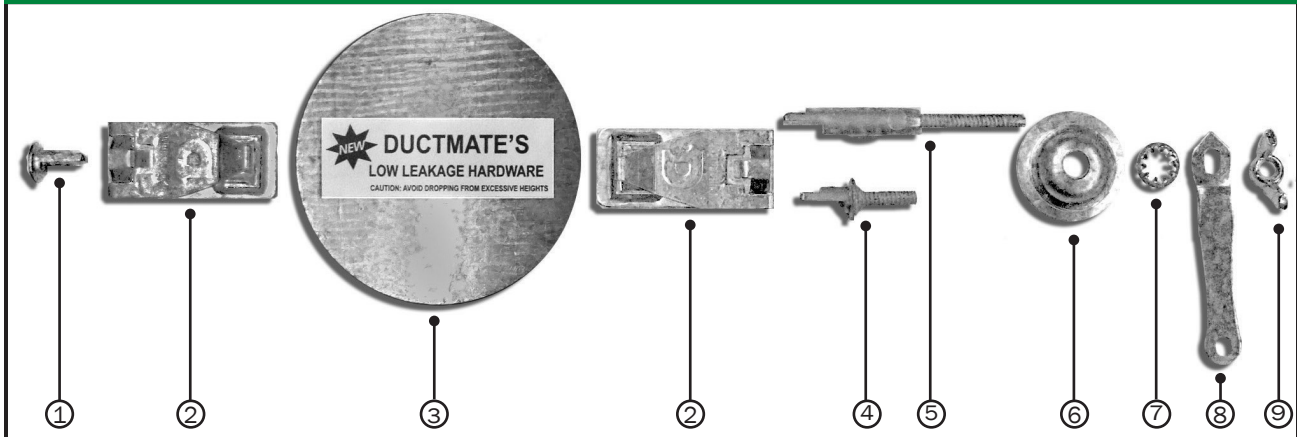
Example: **ECC10GA26** = End Cap with a Crimped End in 26 Ga. Galvanized Steel with Crimped Ends.

EC	P	10	GA	26
End Cap	Large End C - Crimped (Std.) P - Plain (Opt.)	End Cap Diameter (Ød)	Material GA-Galvanized (Std.) AL - Aluminum S4 - 304 S.S.	Gauge GA - 26, 24 AL - 32 S4 - 26

Items in green denote available options

Appendix A - Damper Hardware

Appendix A * Ductmate's Patented Low-Leakage Hardware



Patent # 6,209,850

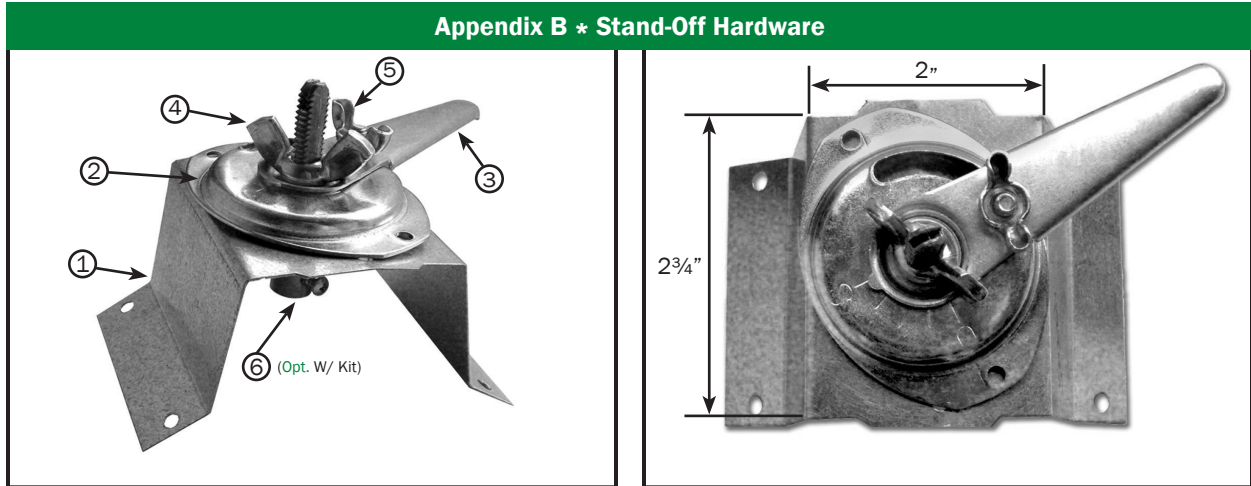
Ductmate Patented Low Leakage Damper Hardware Components

1. **Ductmate Patented Die Cast Insert (Dead End)** - Zinc-Aluminum Cast Alloy. 11/32" Diameter shaft x 9/16" Diameter Cap to Seal 3/8" Diameter Hole in Fitting Body.
2. **Ductmate Patented Damper Clip (2 Req'd.)** - 18 Gauge G-60 Galvanized Steel
3. **Damper Blade** - 24 Gauge G-60 Galvanized Steel. Damper Blades that are 12" Diameter and Larger are Stiffened with (2) 3/8" Crimps 2 1/4" Apart Straddling the Damper Clips.
4. **Ductmate Patented Die Cast Insert (Threaded End)** - Zinc-Aluminum Cast Alloy. 11/32" Diameter Shaft with 5/16"-18 UNC-1A Threads.
5. **Ductmate Patented Die Cast Insert (Threaded End for Stand-Off)** - Zinc-Aluminum Cast Alloy. 11/32" Diameter with 5/16"-18 UNC-1A Threads. Supplied with Dampered Fittings with a 1 1/2" or 2" Stand-Off (see Appendix B on page 27).
6. **Cup Washer** - 18 Gauge G-60 Galvanized Steel.
7. **Lock Washer** - 5/16" Internal Tooth Zinc Coated Lock Washer.
8. **Damper Handle** - 18 Gauge G-60 Galvanized Steel.
9. **Wing Nut** - 5/16" Zinc Coated Wing Nut.

Note:

All Galvanized Steel Components Meet ASTM A653 and A924.
All G-60 Galvanized Coating Meets ASTM A653 and A90.

Appendix B - 1 1/2" or 2" Stand-Off



Stand-Off Hardware Components

1. **Stand-Off Bracket** – Available in 1 1/2" and 2". 26 Gauge G-60 Galvanized Steel.
2. **1/4 Turn Dial Regulator** - 20 Gauge G-60 Galvanized Steel
3. **Damper Handle** – 20 Gauge G-60 Galvanized Steel.
4. **Wing Nut** – 5/16" Zinc Coated Wing Nut.
5. **Handle Lock Wing Nut** – Galvanized (used to lock handle in desired position)
6. **Shaft Extension (Optional w/Kit)** – Zinc-Aluminum Cast Alloy with 5/16"-18 UNC-1A Threads and a 1/8" Set Screw. Supplied with Stand-Off Kits listed below.

Note:

All Galvanized Steel Components Meet ASTM A653 and A924.
All G-60 Galvanized Coating Meets ASTM A653 and A90.

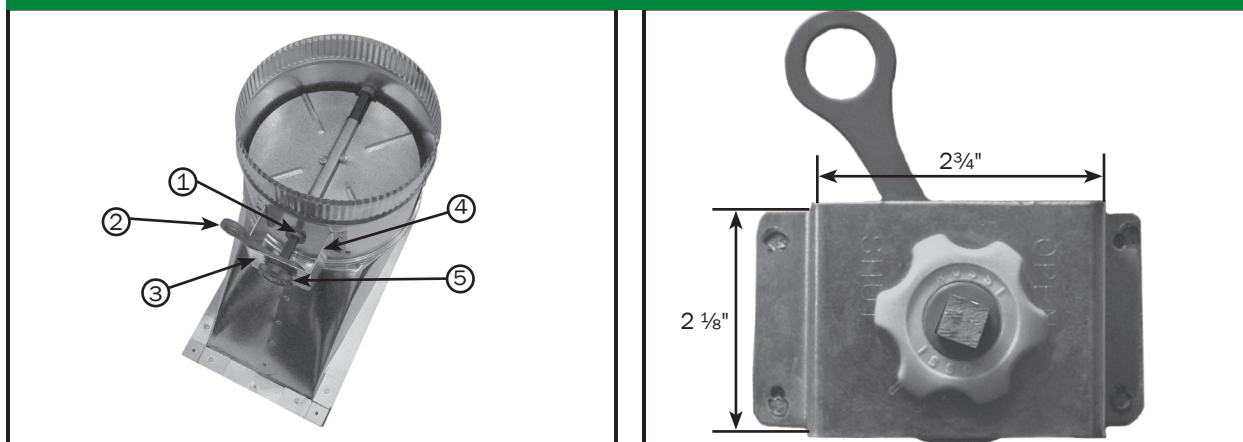
Part Numbers

Stand-Off Kits (Available for Retrofit. 50/Carton):

- | | |
|-----------------|--------------------------------------------------------|
| SDRKIT15 | 1 1/2" Stand-Off Kit (Includes Items 1-6 Listed Above) |
| SDRKIT2 | 2" Stand-Off Kit (Includes Items 1-6 Listed Above) |

Appendix C - 3/8" Rod Damper

Appendix C * 3/8" Rod Damper & Stand-off Hardware



3/8" Rod Damper Hardware Components

1. **3/8" Bushing** – Cast resin
2. **Handle** - Super-tough engineered 6/6 nylon resin
3. **Stamped Regulator**
4. **Standoff** – 18 gauge G90 galvanized steel (available in 1 1/2" or 2" heights)
5. **Locking Knob**

Note:

- Galvanized steel standoff bracket meets ASTM A527 LFQ G90.
- Non-metallic materials are UL listed, SMACNA approved & plenum rated.

Thinking Green... It's a Ductmate Thing.



*GreenSeam reduces leakage by 95%
along the longitudinal seam
without sealant or tape.*

At Ductmate, we've been a product innovator and engineering solutions provider for more than 30 years. Through those decades, we've garnered over two dozen worldwide and U.S. patents, and a litany of HVAC product awards. But this one is special. The Green Building Alliance® Product Innovation Grant is a recognition of our ability to invent, grow, and develop product innovations that promise to make a significant impact on the green building industry.

This grant is awarded to projects that seek to develop and introduce new and enhanced green building products. GreenSeam™ is a unique self-sealing snap-lock pipe, designed to provide increased efficiency for residential and commercial HVAC applications. Engineering simplicity is the key to GreenSeam's effectiveness. By integrating a gasket into the entire length of the longitudinal snap-lock seam, GreenSeam reduces leakage by 95% along the longitudinal seam without depending on external tapes or sealants. GreenSeam has quickly become a cost-effective key component of today's sustainable HVAC systems.

So, while we are honored to have received this recognition, we see it as simply the result of doing what we do. Thinking Green. It's a Ductmate thing. To learn more, call us at 1-800-245-3188, or visit our Online Information Center at www.ductmate.com.



ductmate.com/sustainability

This catalog is printed using recycled and Sustainable Forestry Initiative (SFI) Certified fibers.